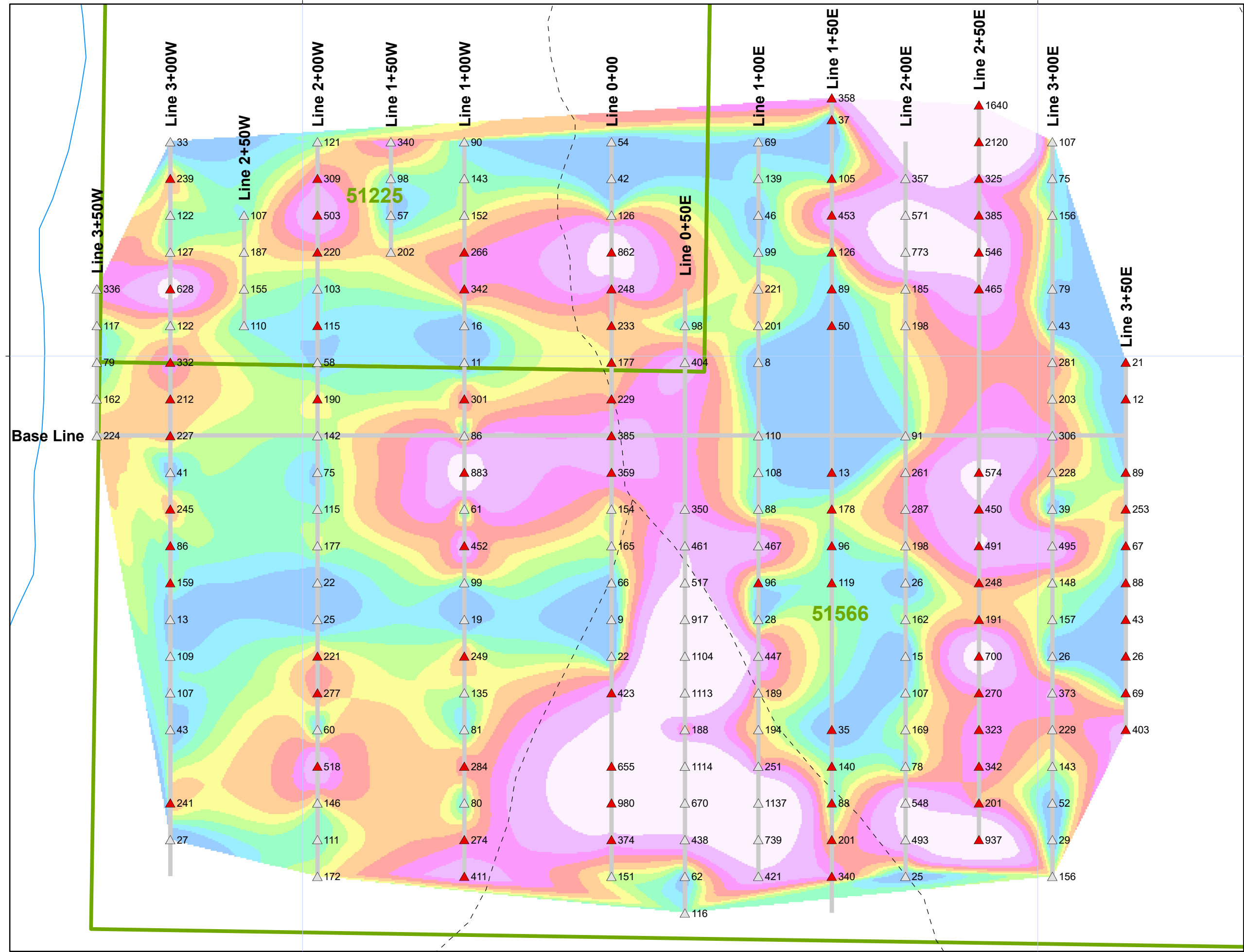


Hants County
Nova Scotia

401500

402000



401500

402000

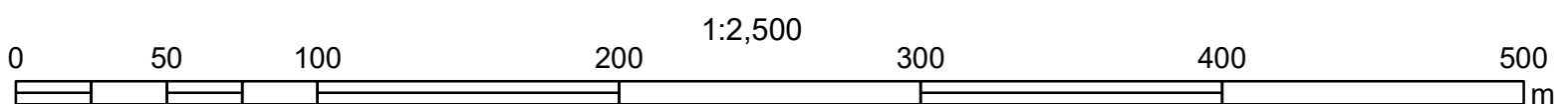
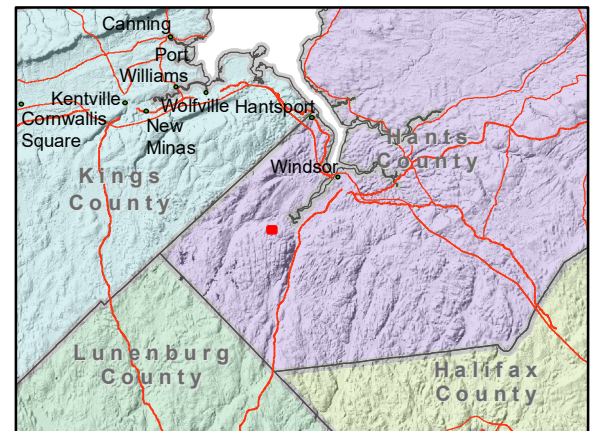


Figure 2018- SOILS-Zn-all
1:2500
Castle Frederick Project
All Zn ppm to date
XRF and ActLab
2018-02-13



Legend

NS DNR Claims (2017-05-08)

Zn ppm

type

- ActLab - Min Detection 1 ppm
- XRF1; XRF2; XRF3

Zn

ppm

- 8 - 90.8
- 90.9 - 115.7
- 115.8 - 140.5
- 140.6 - 165.4
- 165.5 - 190.2
- 190.3 - 231.6
- 231.7 - 281.3
- 281.4 - 339.3
- 339.4 - 471.8
- 471.9 - 2,120
- theoretical grid
- resource roads
- Hydrography**
- Open water
- Swamp
- Watercourse

Sources:
NTS 21H08
Base Mapping:
Geonova (Service Nova Scotia & Municipal Relations)
Mineral Licence, Tract Data and
Historic DDH data:
Nova Scotia Department of
Natural Resources

Geodetic Data:
Earth Datum, North American 1983
UTM Zone, 20